

INSTALLATION DIRECTIONS

BEFORE APPLYING THIS DEVICE

- Threshold (if any) must be installed.
- Doors must be fitted and hung.
- Check that handing of hardware corresponds with handing of door. See Fig. 3.

1. APPLY STRIKE

- Tape appropriate strike template to stop.
- When Von Duprin Mullion is used apply strike at tapped holes in Mullion. (See illustration 1 or 2)
- Vertical rod and rim devices on pairs of doors require 1609J strike. See template No. 30021 for this application.

2. PREPARE DOOR

- Tape full size template No. 1 or 2, depending on handing of door, to inside face of lock stile. See Device Height Schedule.

NOTE: BE SURE CENTERLINE OF LOCK STILE CASE IS PARALLEL TO STOP AND THAT EDGE OF CASE IS 3/16" FROM EDGE OF STRIKE. STRIKE MUST BE SHIMMED OUT IF LOCK CASE IS MOUNTED MORE THAN 3/16" FROM STRIKE.

- Prepare door as shown. See Fig. 1 for wood door application, and Fig. 2 for metal door application.

3. APPLY OUTSIDE TRIM

- See directions in trim carton. Line "X-X" on trim template corresponds to line "X-X" on device template and is parallel to edge of door. Transfer line "X-X" from inside face to outside face of door.
- Prepare outside face of lock stile.
- If necessary, cut off knob spindle to extend 1/4" to 1/2" and cylinder tailpiece to extend 5/8" to 3/4" thru door and into device case.
- Apply outside trim.

4. INSTALL LEVER ARMS

- Insert lever arms into lock stile and hinge stile cases.
- Assemble axes and tighten securely. (See instructions in axle envelope.)

5. APPLY LOCK STILE CASE

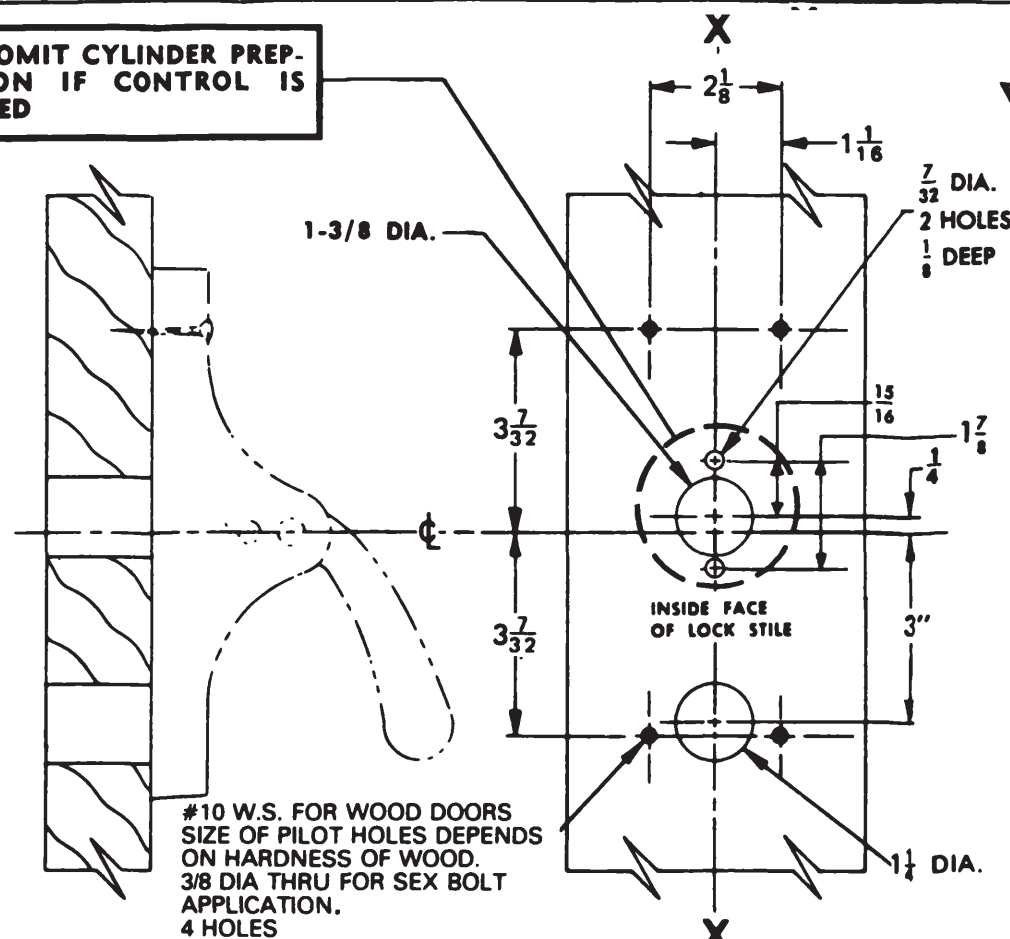
- Remove key from cylinder.
- Position cylinder cam as shown in Fig. 3.
- Attach lock stile case to door. (See Fig. 1 or Fig. 2)
- Test key and knob action.

6. APPLY HINGE STILE CASE AND CROSSBAR TUBE (FIG. 4)

- Dog lever arms in depressed position.
- Slip crossbar tube on lock stile and hinge stile lever arms. (See Direction No. 941009 for cutting crossbar, if necessary.)
- Be sure crossbar is level and hinge stile case is parallel to edge of door and approximately on centerline of exposed stile.
- Using holes in hinge stile case, mark location and prepare door for attaching screws.
- Apply hinge stile case with crossbar in place.
- Tighten wedge-lite set screws securely with dog key and screwdriver or equivalent for leverage, and test crossbar for free action. (See Direction No. 941009 for these instructions.)

NOTE: When this device is ordered with two cylinder operation — inside key locks knob. When locked from inside, outside key retracts latch bolt.

NOTE: OMIT CYLINDER PREPARATION IF CONTROL IS SPECIFIED



WOOD DOOR APPLICATION
FIG. 1

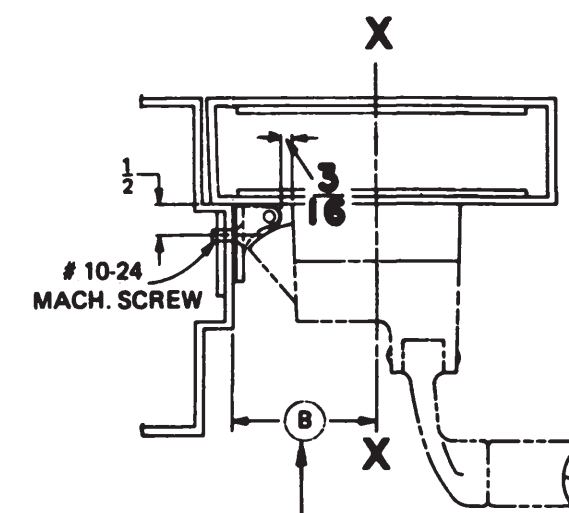
REMOVE SCREWS AND MOVE KNOB HUB AND BRACKET IF CHANGE OF HANDING IS REQUIRED.

KNOB CAM HUB AND BRACKET ASSEMBLY IN THIS POSITION FOR LHR DOOR.

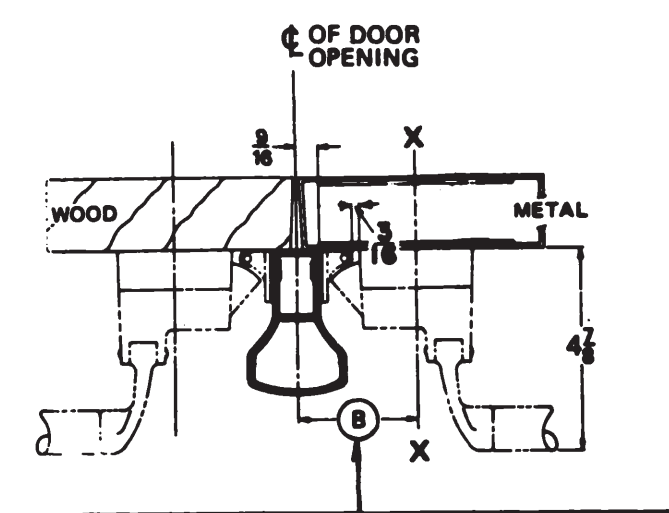
KNOB CAM HUB AND BRACKET ASSEMBLY IN THIS POSITION FOR RHR DOOR.

FIG. 3

Tip of cylinder cam to be in this position. Be sure key is removed from cylinder.



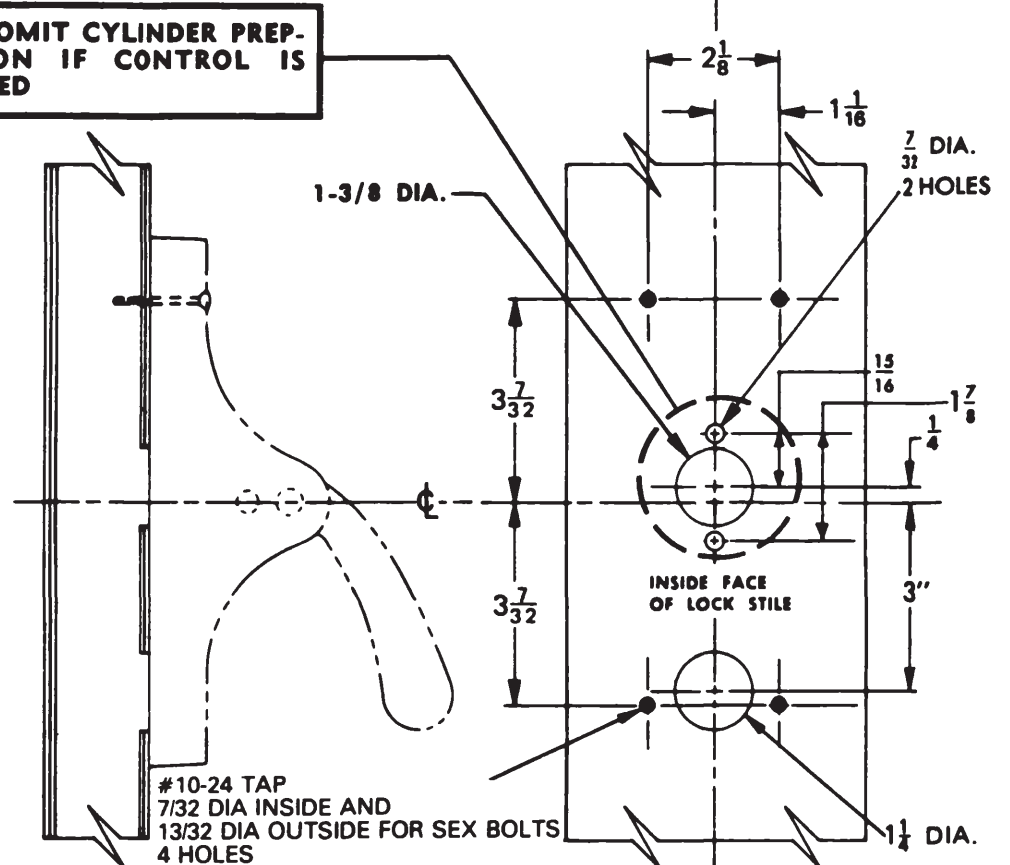
SINGLE DOOR INSTALLATION		
STRIKE	DIMENSION (B)	MIN. STILE
299/299F (Shown)	2-3/8	4-3/8
264	2-1/8	4-1/8
1606	1-15/16	3-15/16



DOUBLE DOOR INSTALLATION WITH VON DUPRIN MULLIONS		
MULLION & STRIKE	DIMENSION (B)	MIN. STILE
5254/5654 x 299/299F (Shown)	2-15/16	4-1/4
5654 or 5254 x 264	2-11/16	4"

ILLUST. 1

NOTE: OMIT CYLINDER PREPARATION IF CONTROL IS SPECIFIED



METAL DOOR APPLICATION
FIG. 2

SINGLE DOOR OPENING
39-13/16 TO FINISHED FLOOR

DOUBLE DOOR OPENING WITH VON DUPRIN MULLION AND THRESHOLD	
THRESHOLD NO.	TO FIN. FLOOR
ALL THRESHOLDS	39-11/16
NO THRESHOLD (FLAT SILL)	39-11/16

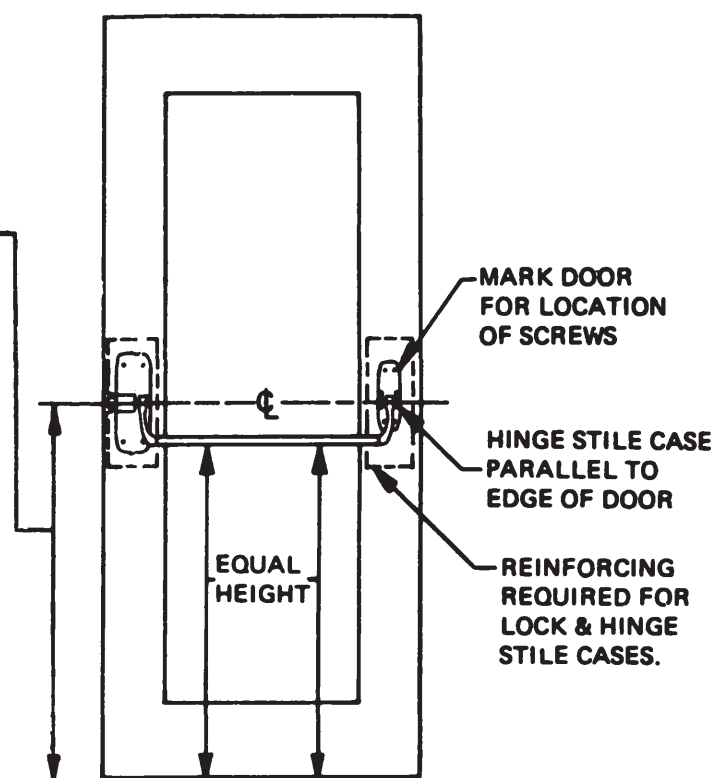
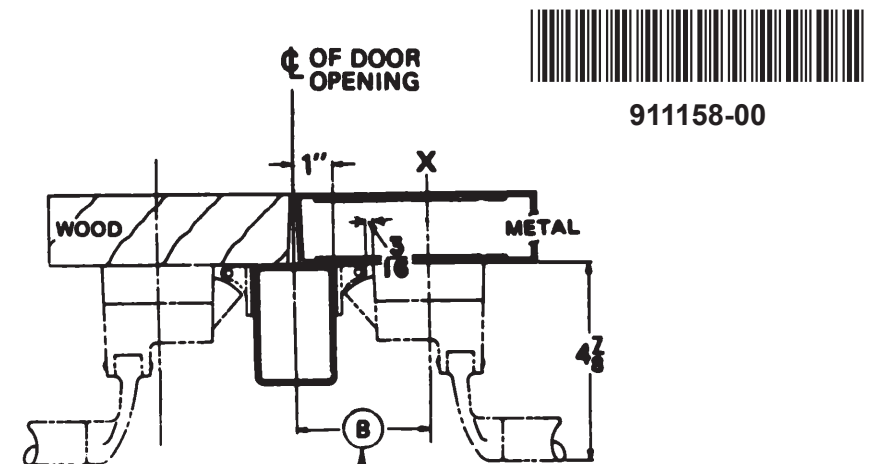


FIG. 4



DOUBLE DOOR INSTALLATION WITH VON DUPRIN MULLIONS		
MULLION & STRIKE	DIMENSION (B)	MIN. STILE
4954 x 299/299F (Shown)	3-3/8	4-11/16
4954 x 264	3-1/8	4-7/16
1654 x 1606	2-15/16	4-1/4

ILLUST. 2

Customer Service

1-877-671-7011 www.allegion.com/us

DESCRIPTION

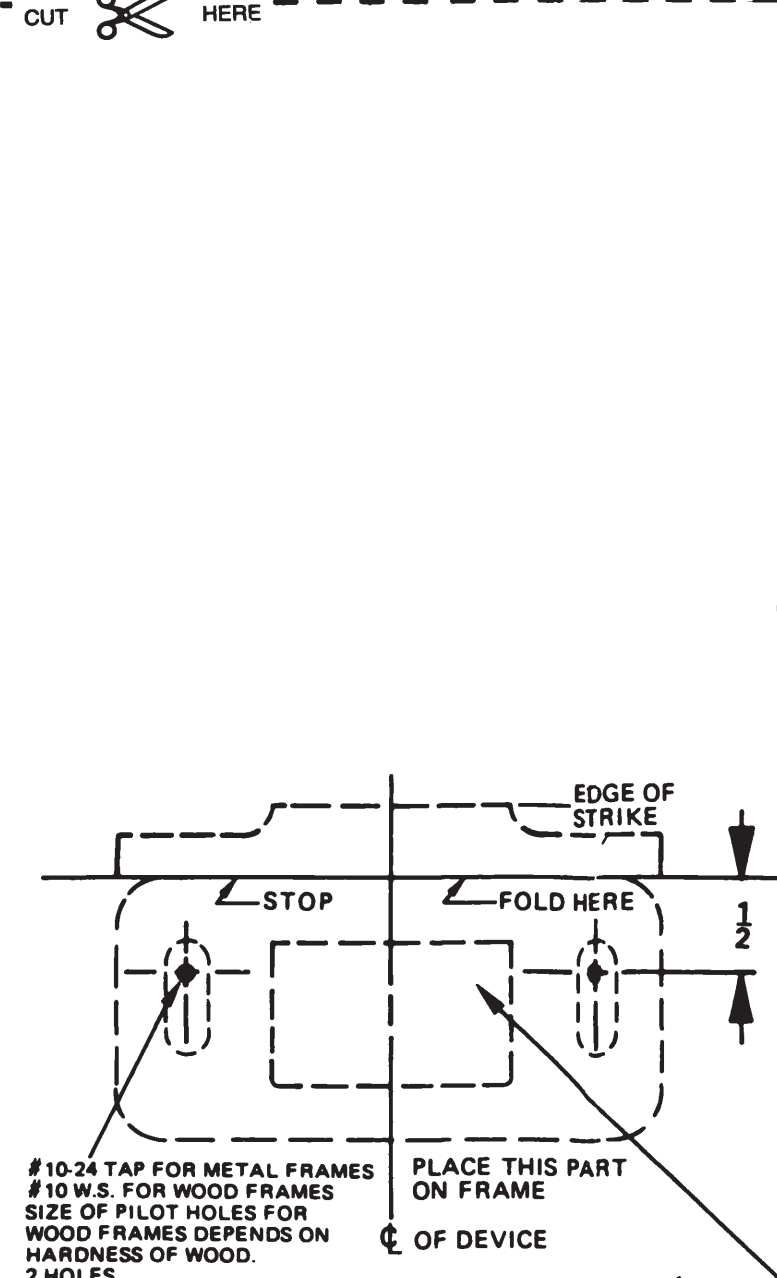
88K SERIES RIM DEVICES

VON DUPRIN

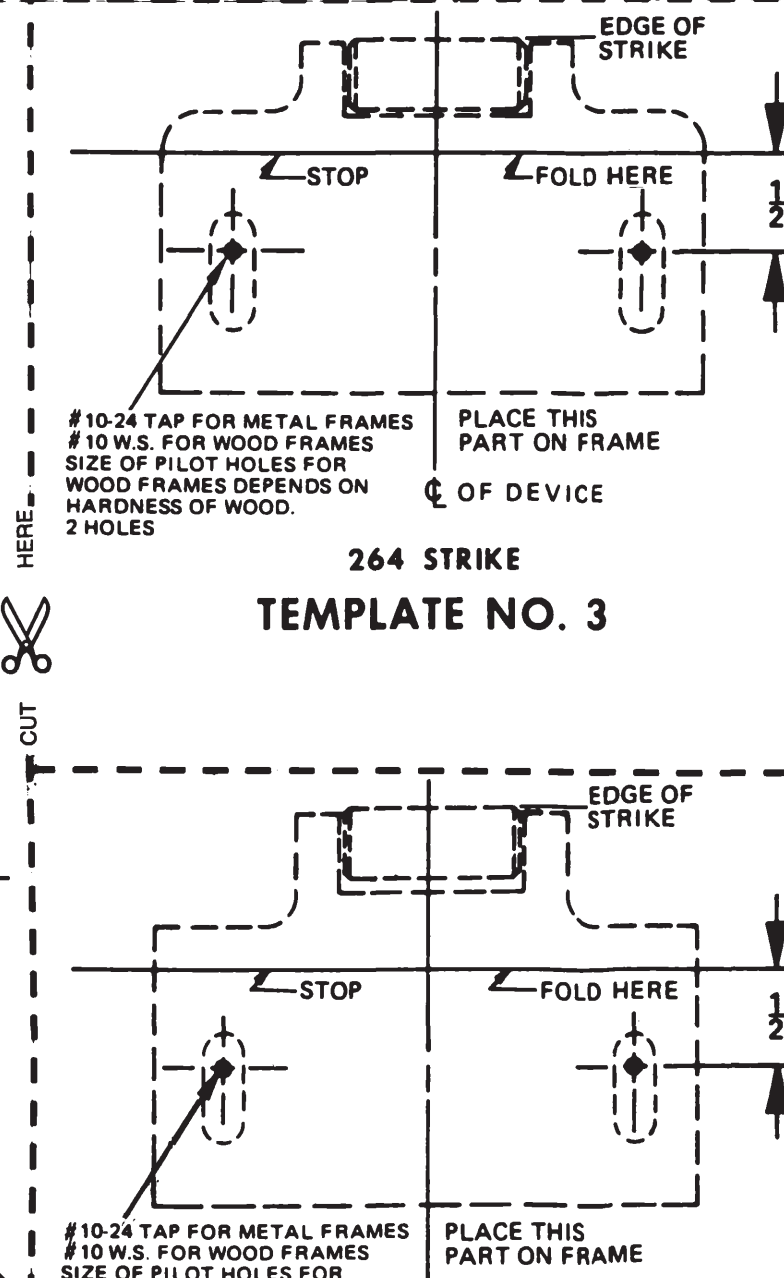
DIRECTION NUMBER 911158-00 (b) DATE 06/14

CUT HERE

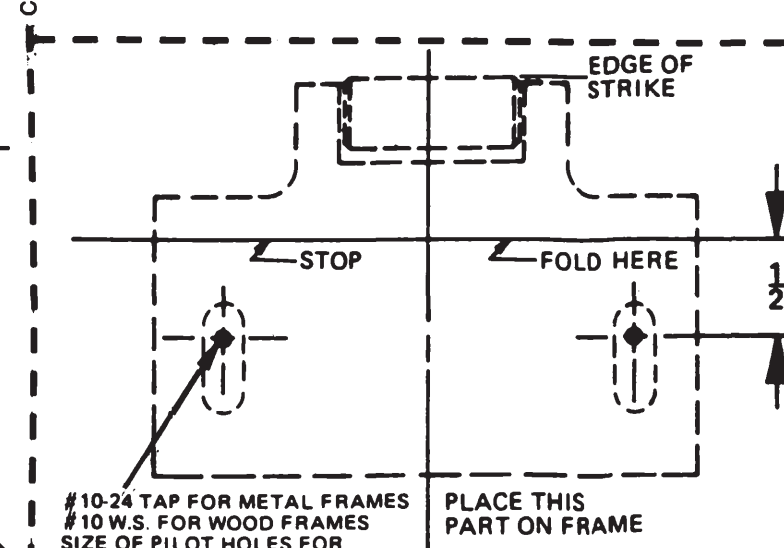
CUT HERE



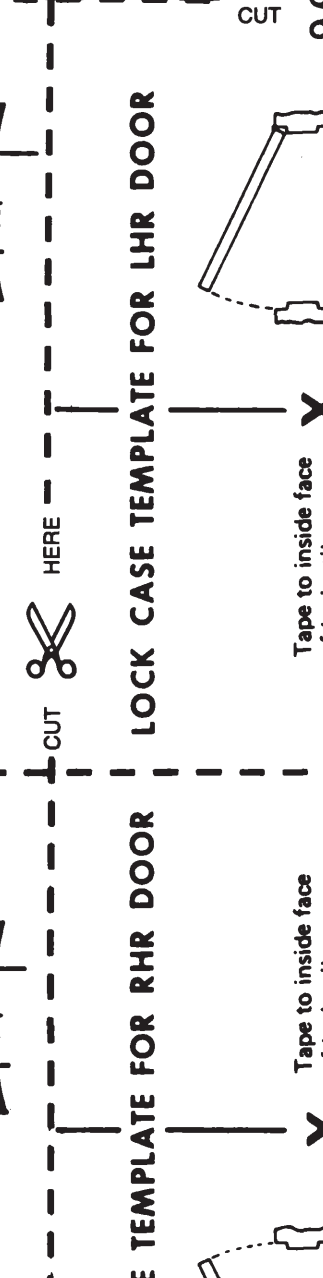
1606 STRIKE
TEMPLATE NO. 5



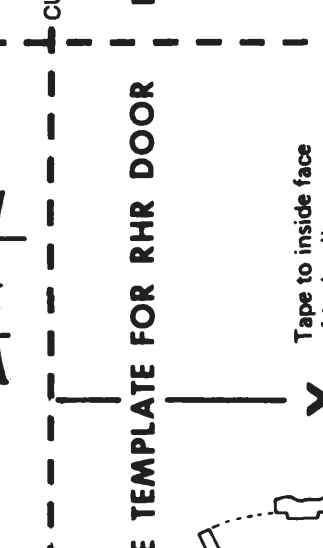
264 STRIKE
TEMPLATE NO. 3



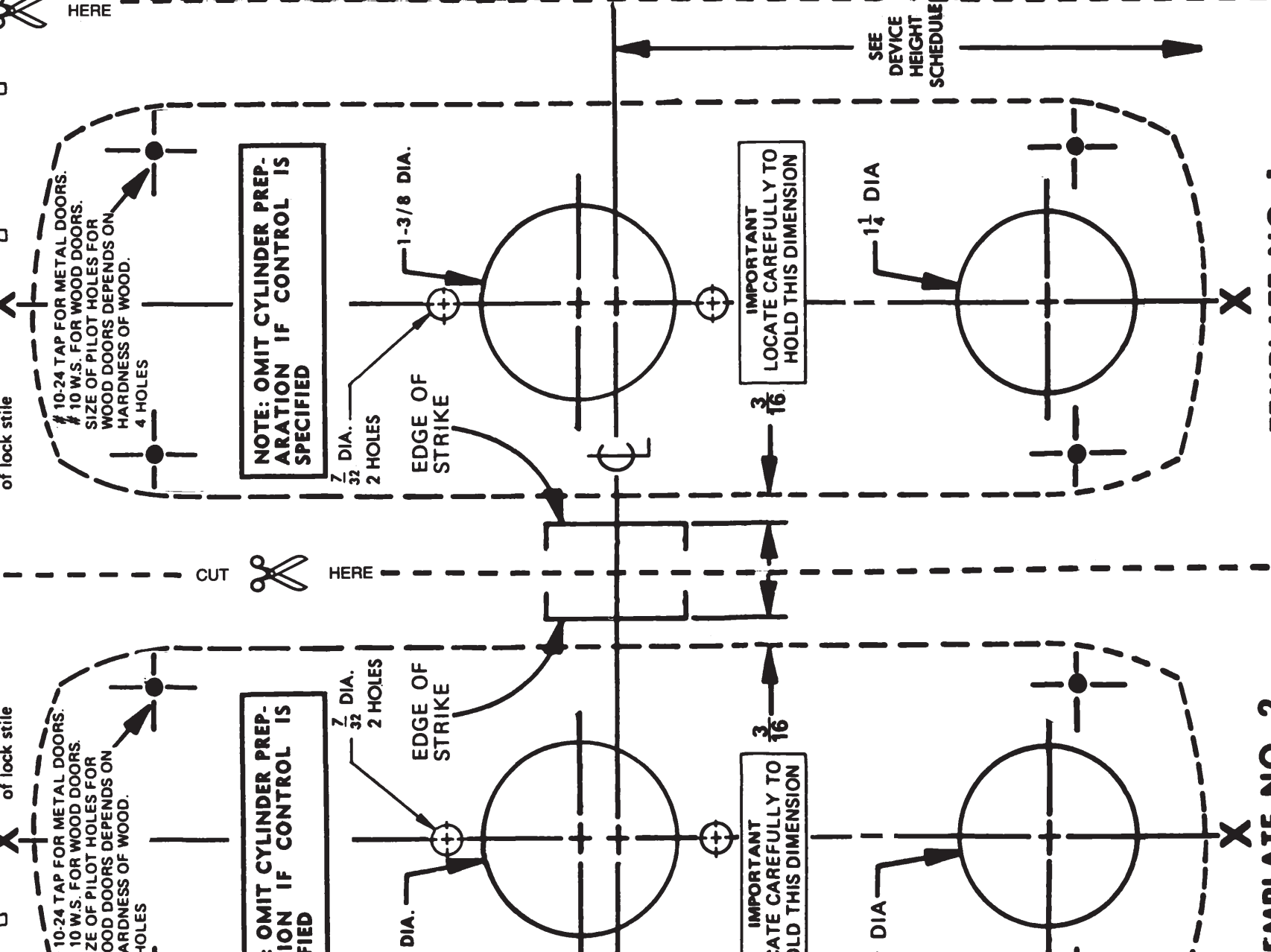
299/299F STRIKE
TEMPLATE NO. 4



LOCK CASE TEMPLATE FOR LHR DOOR



LOCK CASE TEMPLATE FOR RHR DOOR



TEMPLATE NO. 1

TEMPLATE NO. 2

SEE DEVICE HEIGHT SCHEDULE

SEE DEVICE HEIGHT SCHEDULE



941104-00

373-L, 373-L-BE

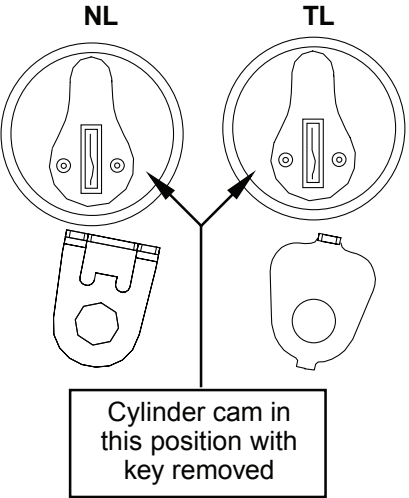
VON DUPRIN®

Control for 88 Rim Device on Metal or Wood Door

Installation Instructions

INSTALLATION INSTRUCTIONS

1. Prepare door for exit device. See exit device instructions for locations of holes, backset (line X-X), and center lines.
2. Prepare door for control:
 - a. Transfer line X-X from inside (exit device side) of door to outside (control side) of door. Use extra care if edge of door is beveled. Be sure line X-X is parallel to edge of door.
- ① **Note: See back side of sheet for hole preparation for metal or wood.**
 - b. Locate and prepare holes as indicated.
3. Install cylinder into control if required (Figures 1 & 2). Insure cylinder cam is set for required function and replace if necessary.
- ① **Note: Exit device must be in unlocked position before installation.**
4. Install control and exit device to door.
5. Test key, control, and device action.



TL Function - Control remains unlocked when key is removed.

NL Function - Control relocks when key is removed. Requires use of key to operate.

For NL function replace TL cylinder plate (std. on all controls) with NL cylinder plate (included in polybag) replacing screw and washer.

Note: Control must be in locked position when installing cylinder plate.

Figure 1

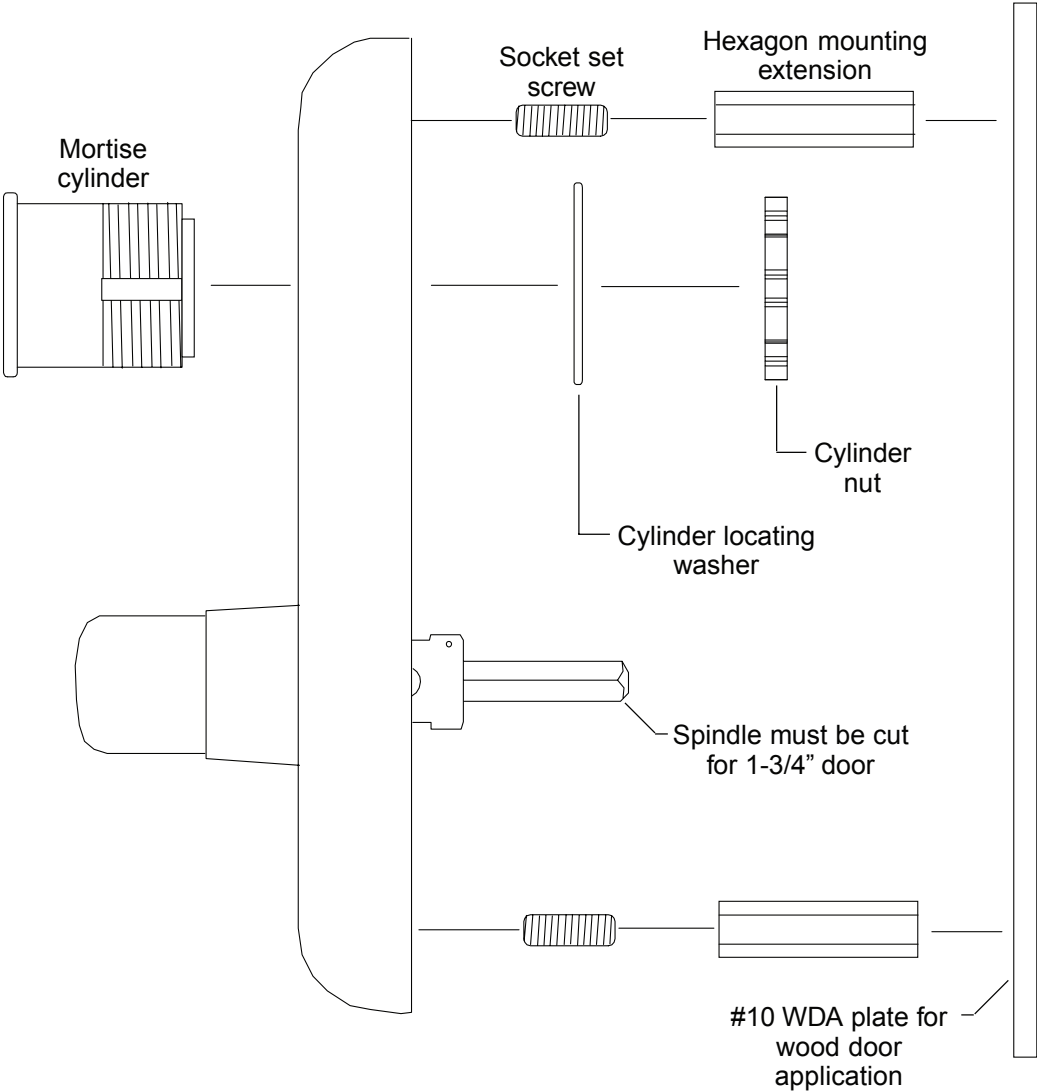
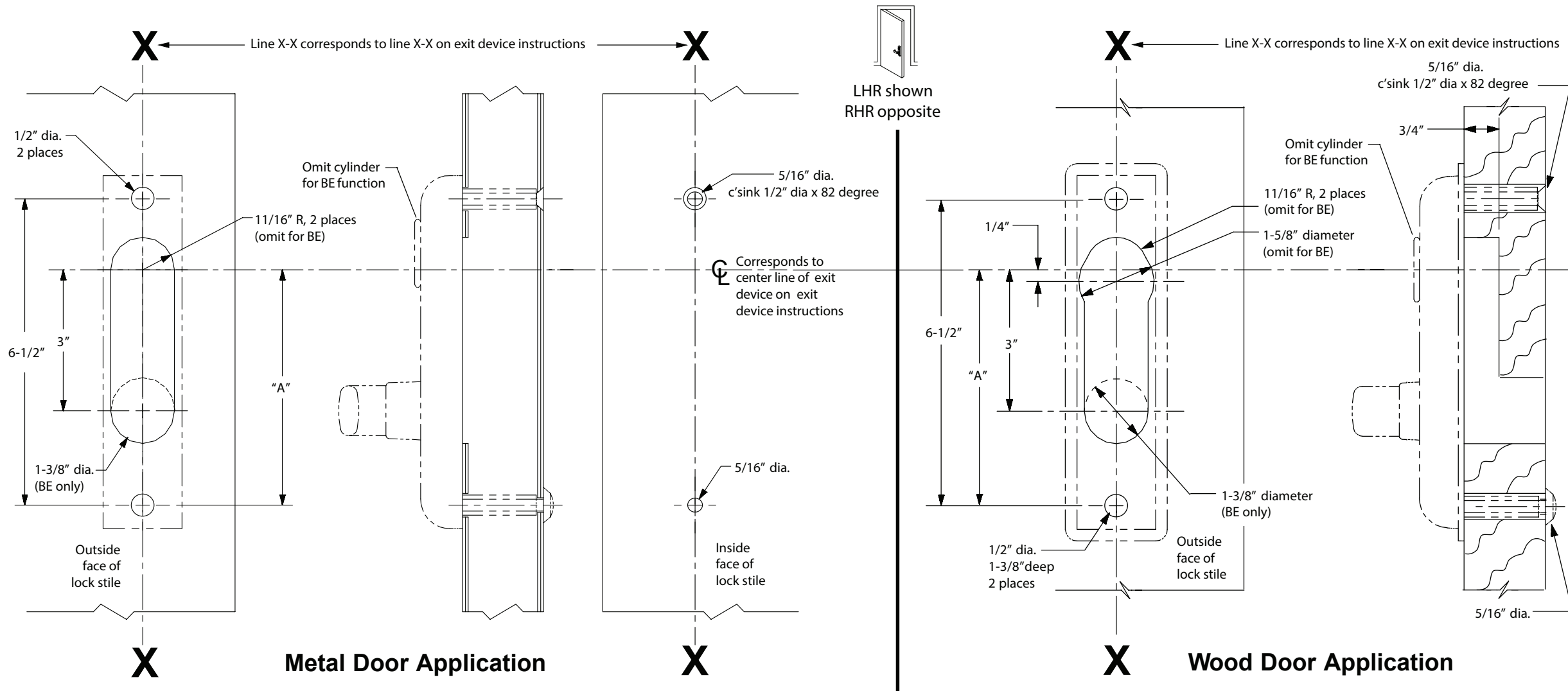


Figure 2



For cutouts on inside face of door see instructions in device carton.

Device Application Schedule

Device	Dimension "A"
88K Rim	5"

Customer Service

1-877-671-7011 www.allegion.com/us

