

## INSTALLATION DIRECTIONS

### BEFORE APPLYING THIS DEVICE

- Threshold (if any) must be installed.
- Doors must be fitted and hung.
- Check that handing of hardware corresponds with handing of door.

### 1. APPLY STRIKE

- Tape appropriate strike template to stop.
- When Von Duprin Mullion is used apply strike at tapped holes in Mullion. (See illustration 1 or 2)
- Vertical rod and rim devices on pairs of doors require 1609J strike. See template No. 30021 for this application.

### 2. PREPARE DOOR

- Tape full size template No. 1 or 2, depending on handing of door, to inside face of lock stile. See Device Height Schedule.

**NOTE** BE SURE CENTERLINE OF LOCK STILE CASE IS PARALLEL TO STOP AND THAT EDGE OF CASE IS 3/16 FROM EDGE OF STRIKE. STRIKE MUST BE SHIMMED OUT IF LOCK CASE IS MOUNTED MORE THAN 3/16 FROM STRIKE.

- Prepare door as shown. See Fig. 1 for wood door application, and Fig. 2 for metal door application.

### 3. APPLY OUTSIDE TRIM IF REQUIRED

- See directions in trim carton. Line "X-X" on trim template corresponds to line "X-X" on device template and is parallel to edge of door. Transfer line "X-X" from inside face to outside face of door.
- Prepare outside face of lock stile.
- Cut off cylinder tailpiece, if necessary, to extend 5/8 to 3/4 thru door and into device case.
- Apply outside trim.

### 4. INSTALL LEVER ARMS

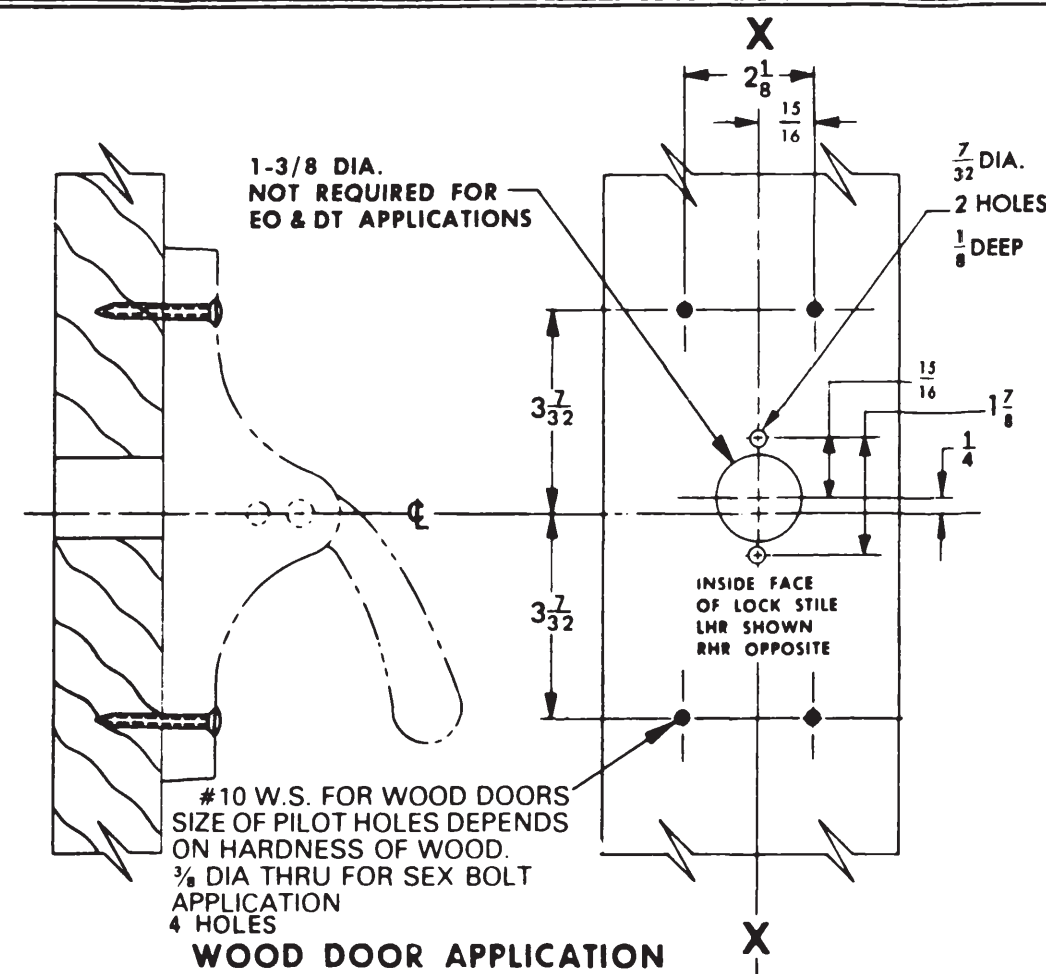
- Insert lever arms into lock stile and hinge stile cases.
- Assemble axes and tighten securely. (See instructions in axle envelope.)

### 5. APPLY LOCK STILE CASE

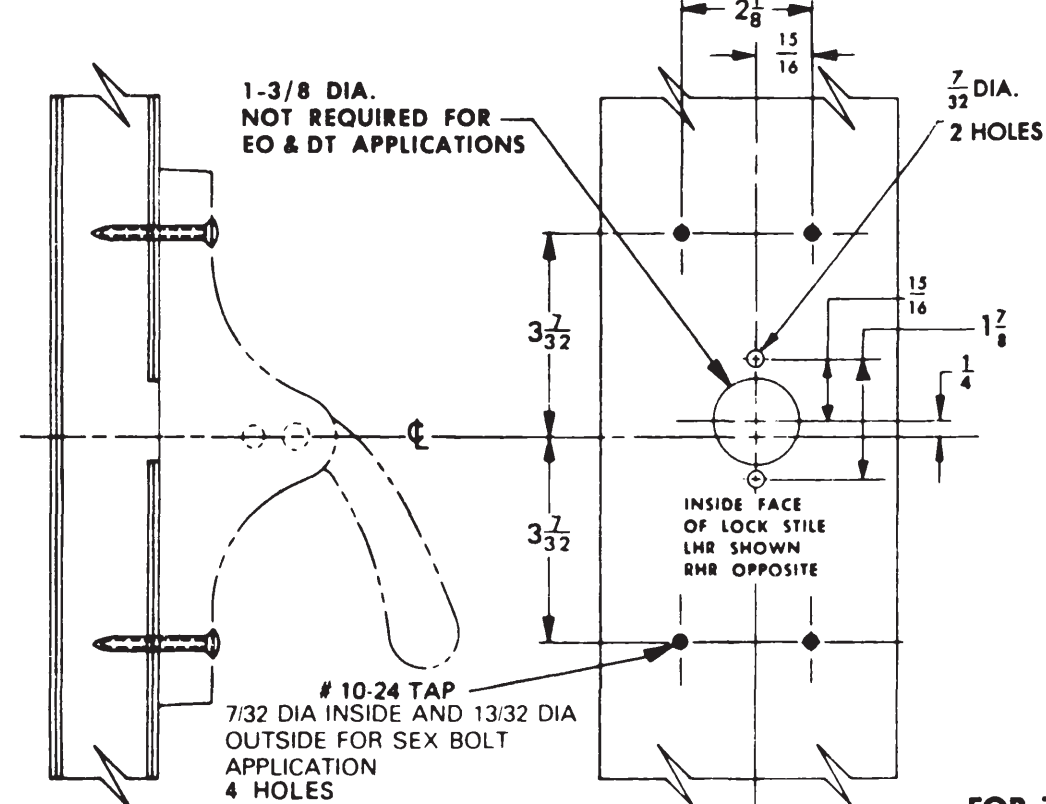
- Remove key from cylinder.
- Attach lock stile case to door. (See Fig. 1 or Fig. 2)
- Test key action.

### 6. APPLY HINGE STILE CASE AND CROSSBAR TUBE (FIG. 4)

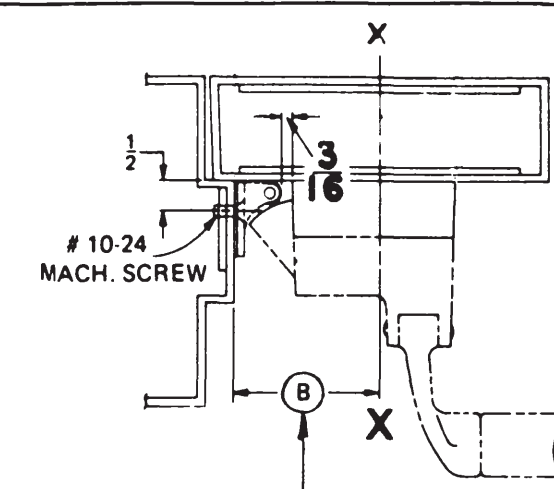
- Dog lever arms in depressed position.
- Slip crossbar tube on lock stile and hinge stile lever arms. (See Direction Sheet 41009 for cutting crossbar, if necessary)
- Be sure crossbar is level and hinge stile case is parallel to edge of door and approximately on centerline of exposed stile.
- Using holes in hinge stile case, mark location and prepare door for attaching screws.
- Apply hinge stile case with crossbar in place.
- Tighten wedge-lite set screws securely with dog key and screwdriver or equivalent for leverage, and test crossbar for free action. (See Direction Sheet 41009 for these instructions.)



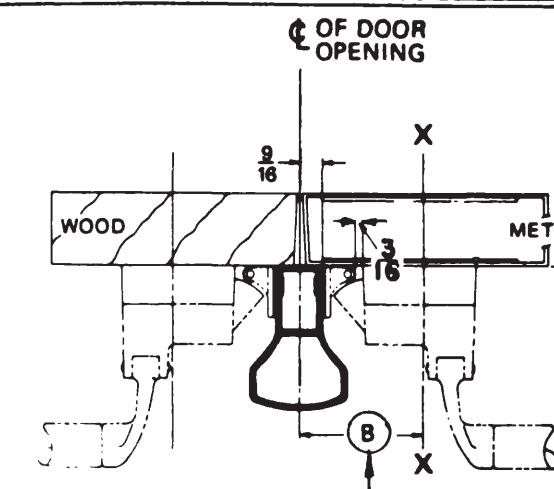
WOOD DOOR APPLICATION  
FIG. 1



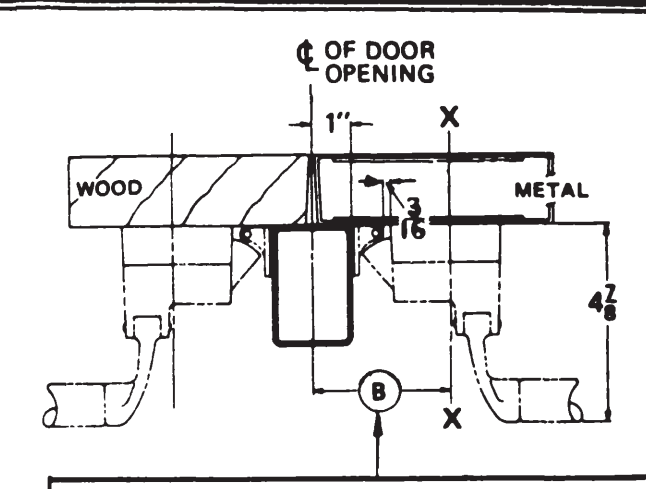
METAL DOOR APPLICATION  
FIG. 2



STRIKE	DIMENSION (B)	MIN. STILE
299(Shown)	2-1/2	4-3/8
264	2-1/4	4-1/8
1606	2-1/16	3-15/16



MULLION & STRIKE	DIMENSION (B)	MIN. STILE
5254/5654x299(Shown)	3-1/16	4-1/4
5254/5654 x 264	2-13/16	4"



MULLION & STRIKE	DIMENSION (B)	MIN. STILE
4954x299(Shown)	3-1/2	4-11/16
4654 x 264	3-1/4	4-7/16
1654 x 1606	3-1/16	4-1/4

ILLUST. 1

ILLUST. 2

SINGLE DOOR OPENING  
39-13/16 TO FINISHED FLOOR

THRESHOLD NO.	TO FIN. FLOOR
ALL THRESHOLDS	39-11/16
NO THRESHOLD (FLAT SILL)	39-11/16

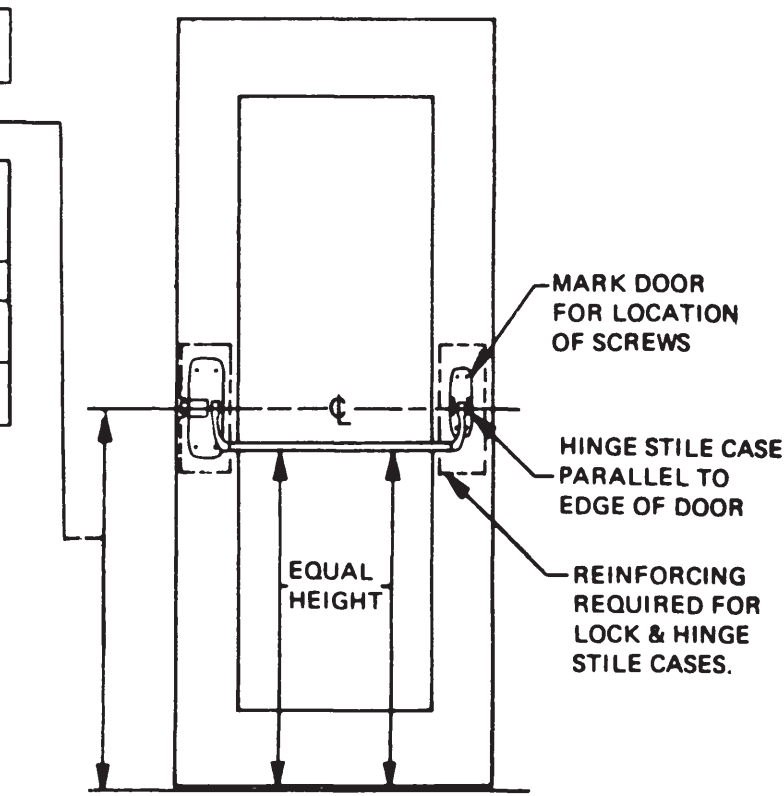


FIG. 4



911156-00



Customer Service

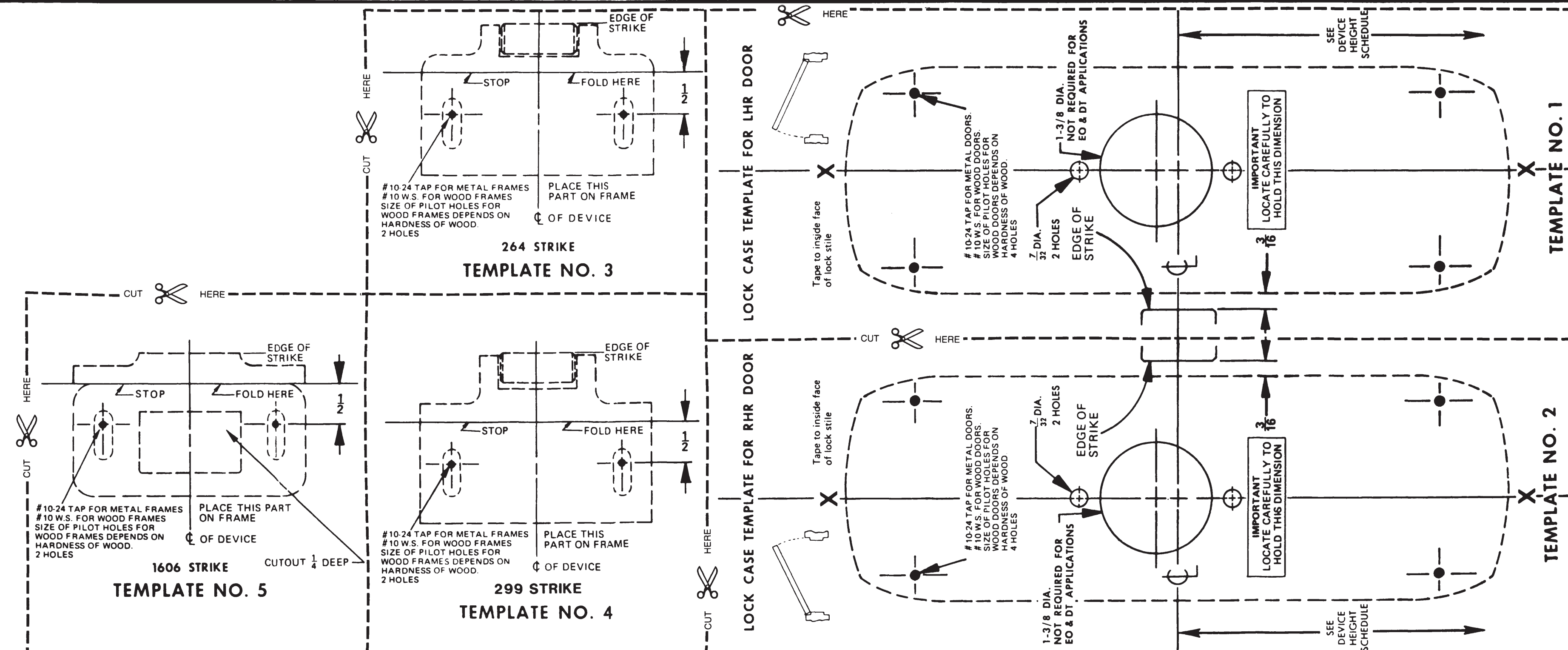
1-877-671-7011 www.allegion.com/us

DESCRIPTION  
880EO, 88DT & 88NL SERIES RIM DEVICE

VON DUPRIN

DIRECTION NUMBER	911156-00(b)	DATE
		Rev. 01/14

FOR TRIM APPLICATION SEE DIRECTIONS  
IN TRIM CARTON IF REQUIRED





921250-00

Trim for 44 and 88 Rim Devices

# 880DT/EO/NL/TP/TP-BE

VON DUPRIN®

Installation Instructions

## 880TP/TP-BE

(see other side for 880DT/EO/NL)

1. Prepare door for exit device. See exit device instructions for holes, line X-X, and center lines.
2. Prepare door for trim:
  - A. Transfer line X-X from inside (exit device side) of door to outside (trim side) of door. Use extra care if edge of door is beveled.
  - B. Locate and prepare all holes as shown.

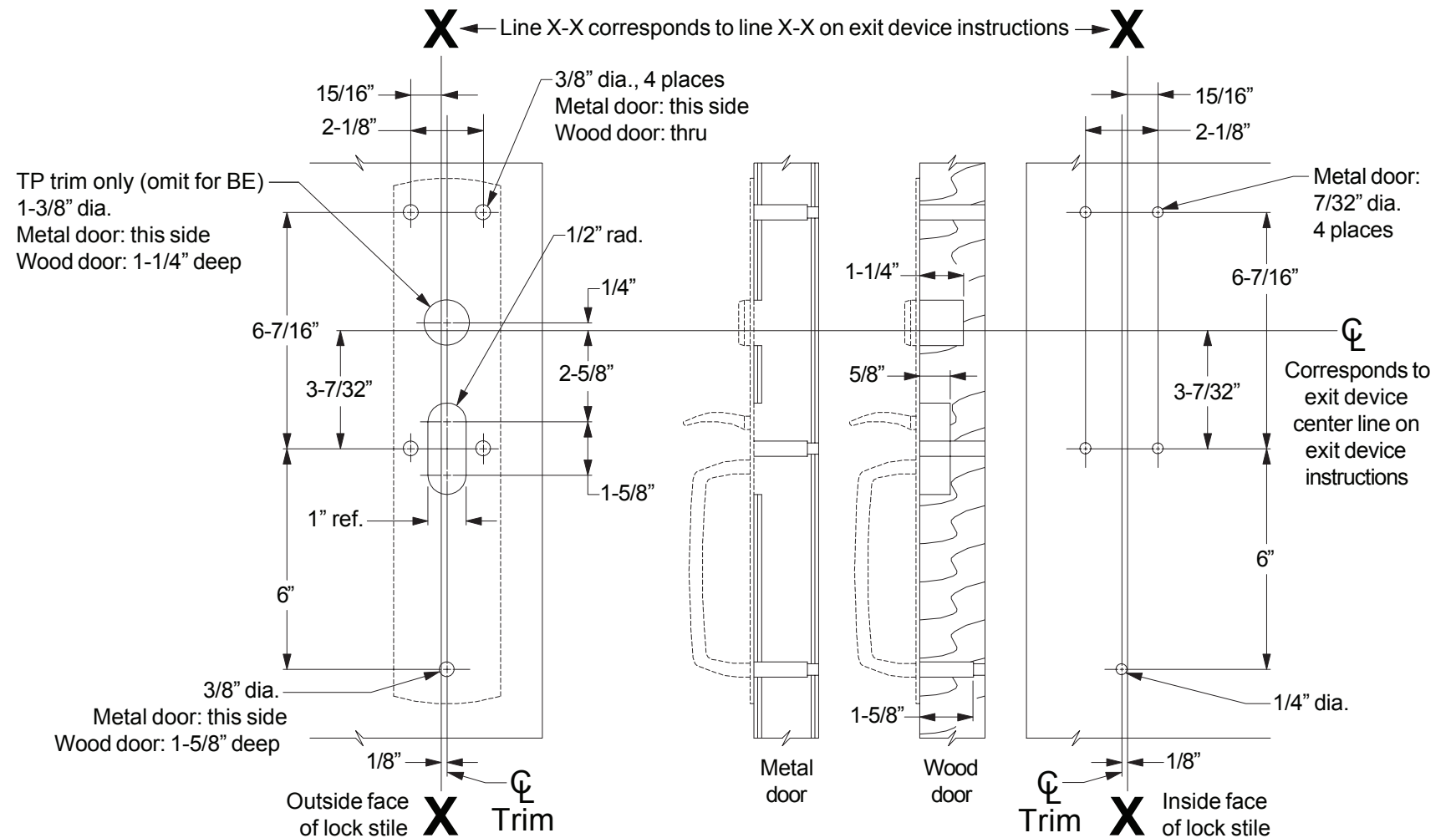


### IMPORTANT

Note that trim center line is offset from line X-X by 1/8" as shown.

3. For TP trim, install cylinder in trim. Cut cylinder tailpiece to extend out of exit device side of door as follows:  
44 Rim device: 3/16" to 1/4" extension  
88 Rim device: 5/8" to 3/4" extension
4. Cut thumbpiece to extend 5/8" to 3/4" out of exit device side of door.
5. Apply trim.
6. Apply exit device.

## 880TP/TP-BE (see other side for 880DT/EO/NL)




LHR shown, RHR opposite

For cutouts on inside face of door, see exit device instructions

**880DT/EO/NL**  
**(see other side for 880TP/TP-BE)**

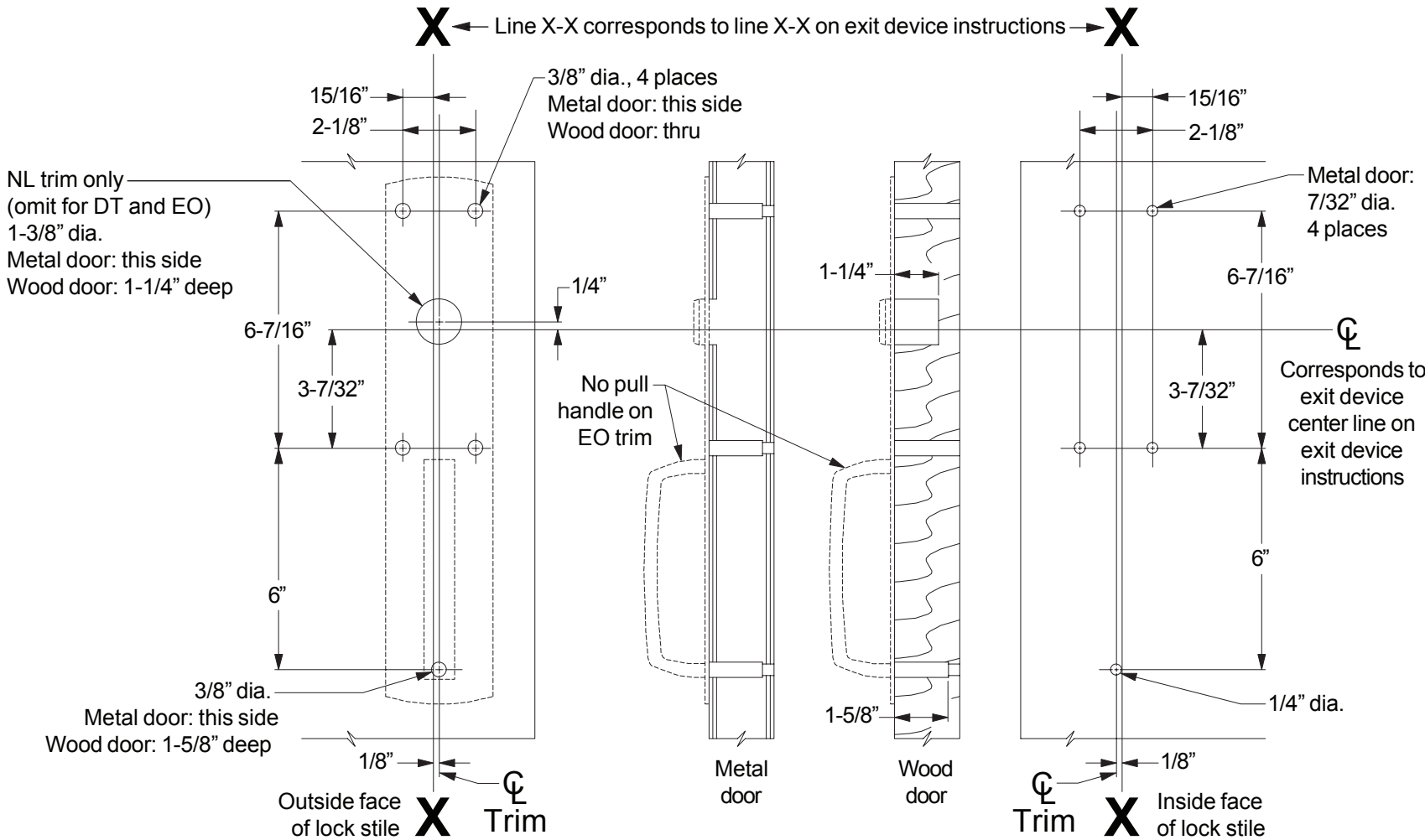
1. Prepare door for exit device. See exit device instructions for holes, line X-X, and center lines.
2. Prepare door for trim:
  - A. Transfer line X-X from inside (exit device side) of door to outside (trim side) of door. Use extra care if edge of door is beveled.
  - B. Locate and prepare all holes as shown.

**IMPORTANT**

Note that trim center line is offset from line X-X by 1/8" as shown.

3. For NL trim, install cylinder in trim. Cut cylinder tailpiece to extend 5/8" to 3/4" out of exit device side of door.
4. Apply trim.
5. Apply exit device.

**880DT/EO/NL (see other side for 880TP/TP-BE)**



LHR shown, RHR opposite

For cutouts on inside face of door, see exit device instructions

Customer Service

1-877-671-7011 [www.allegion.com/us](http://www.allegion.com/us)

