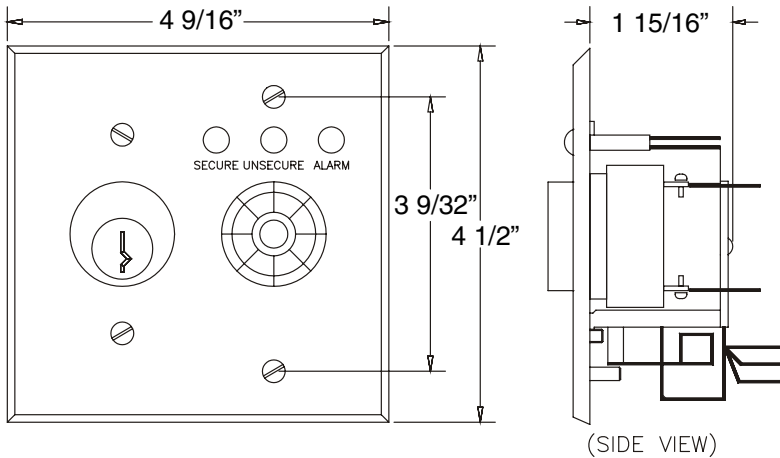




24481491

801-KS Local and Remote Monitoring and Control Station

Installation Instructions



Specifications

Audible

Input Req: 10-28VDC/3-14mA
Rated: 80dB @ 2ft @28VDC

Hook-Up Leads:

(4) 24 AWG - 6" long
BLK (C) - Common
RED (U) - Unsecured
RED (S) - Secure
RED (A) - Alarm

LED Indicators:

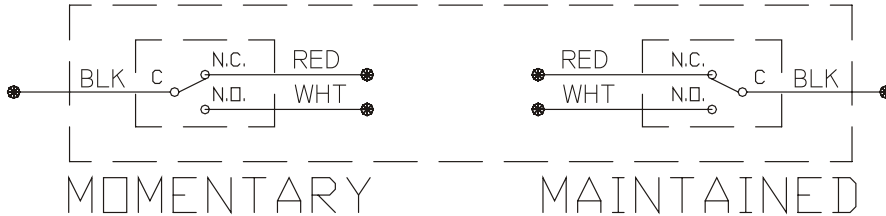
Input Req: 12-24VDC/30mA ea.
Secure - Green
Unsecured - Red
Alarm - Yellow

Keyswitch:

Contacts: 5Amp/30VDC
Wire Leads: 22AWG - 6" long

⚠ IMPORTANT NOTES ⚠

Unit must be equipped with MBS option
for LEDs to work.



Description

Provides local signal to assure users that a delayed egress system is functioning (code requirement). Includes audible and visual indication of lock status and delay activation. Provides two (2) SPDT switches: one momentary, one maintained, which can be wired to release lock and/or reset alarm condition. The keyswitch requires a standar 1-1/4" mortise cylinder with a standard straight cam. Unit mounts in a standard, double-gang electrical box.

Description of Operation

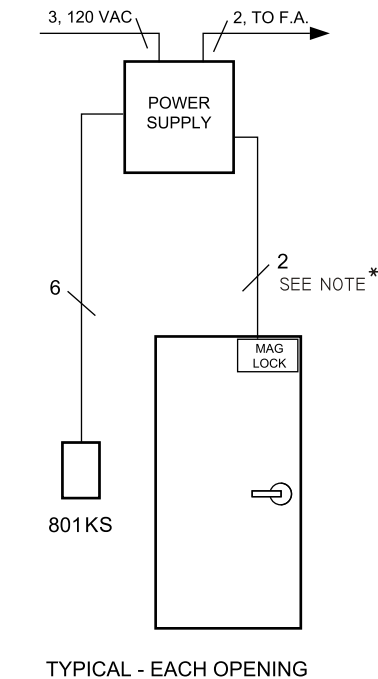
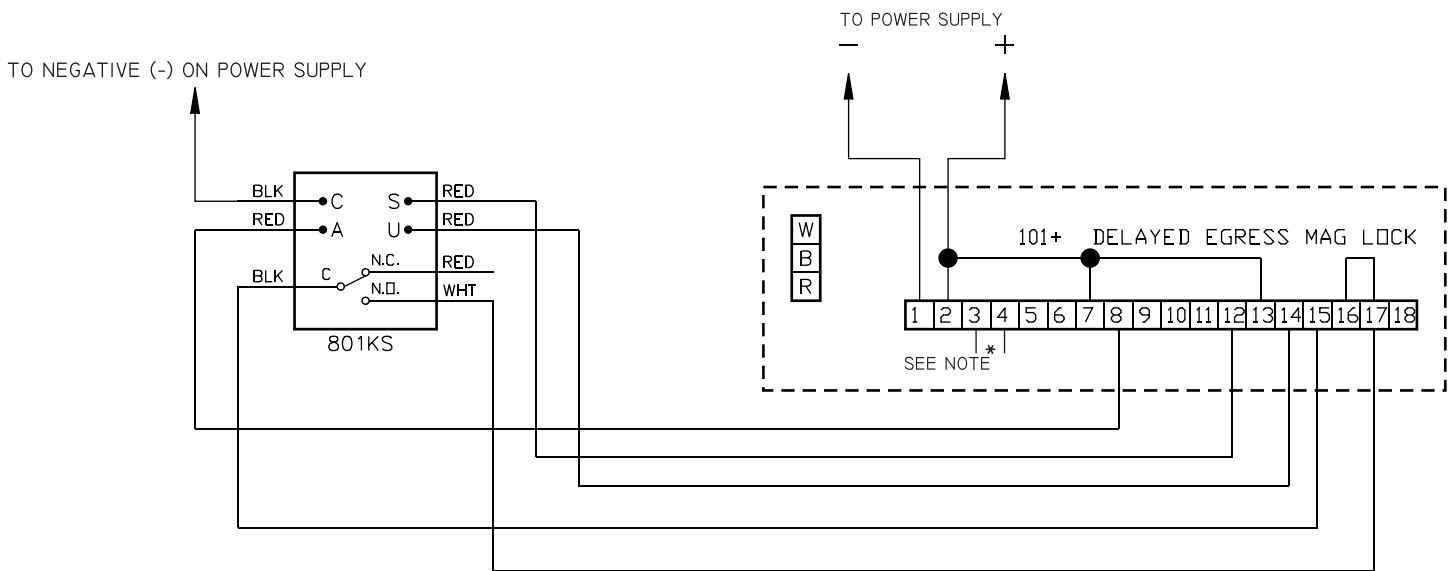
The 801-KS is wired to a magnetic lock delayed egress system. The following is an operation sequence from normal (secure) condition, through an unauthorized egress attempt, to system reset:

Condition:

Door closed and secure
Unauthorized egress attempt
After 15 (or 30) second delay
System reset
Legal release

801-KS Status

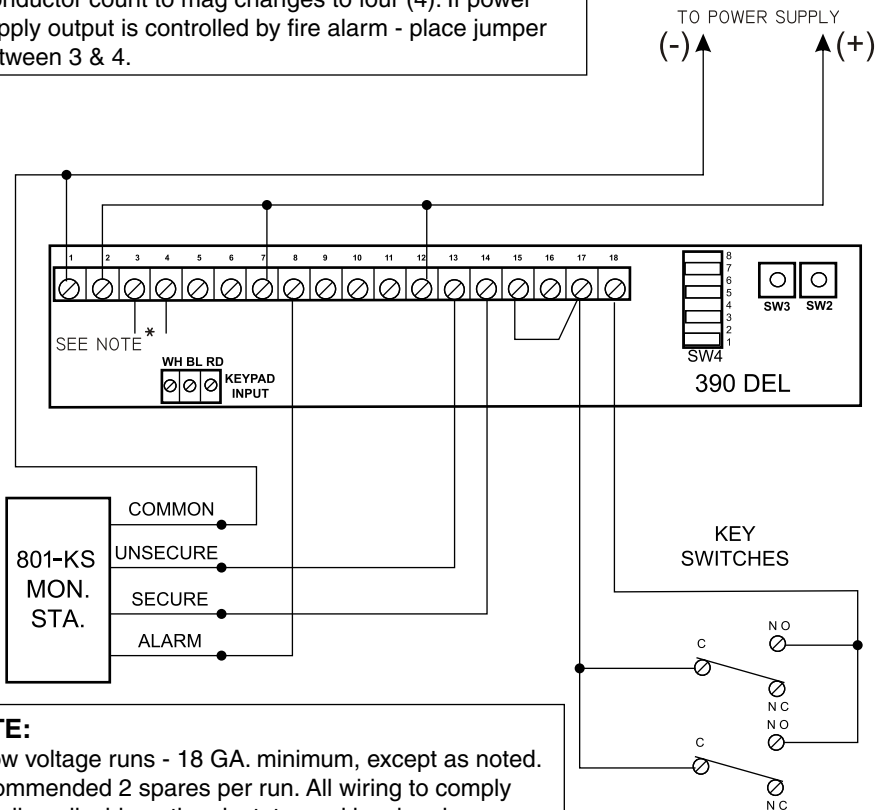
Alarm Silent - Green LED on
Alarm Sounds - Green & Yellow LED on
Alarm Sounding - Yellow & Red LED on
Alarm Silent - Green LED on
Alarm Silent - Red LED on



RISER FOR GRAPHIC REFERENCE.
LOCATE ALL DEVICES PER A-E/G.C./O.R.
ADDITIONAL WIRING FOR OTHER
DEVICES MAY BE REQUIRED.

NOTE:

Fire alarm connection - for direct connection, terminals 3 & 4 connect to N.C. Dry output contacts (open on alarm). Conductor count to mag changes to four (4). If power supply output is controlled by fire alarm - place jumper between 3 & 4.



NOTE:

All low voltage runs - 18 GA. minimum, except as noted. Recommended 2 spares per run. All wiring to comply with all applicable national, state, and local codes.

Customer Service

1-877-671-7011

www.allegion.com/us



© Allegion 2015
Printed in U.S.A.
24481491 Rev. 10/15-c