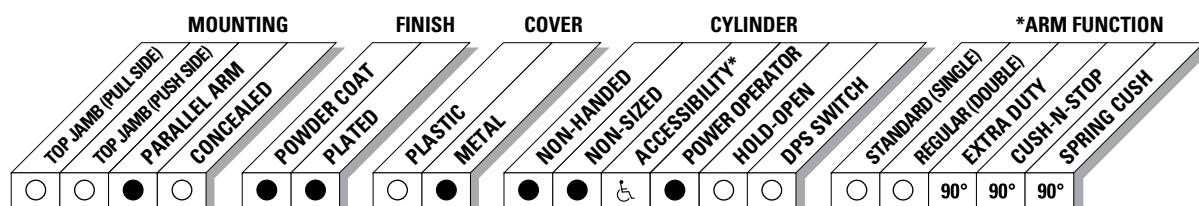


The 4840 AUTO EQUALIZER™ is LCN's pneumatically powered MULTIDOOR solution. This low-energy automatic operator provides easy access for people with disabilities, or the elderly. Designed primarily for manual opening applications that occasionally require automatic opening.

<b>Certifications</b>	Grade 1 - ANSI A117.1, A156.19, UL 10C 228, ADA, 100 Hour Salt Spray, Meets BAA - Buy American Act	<b>Cover</b>	Metal, standard
<b>Body Construction</b>	<ul style="list-style-type: none"> <li>■ Cast Iron Body</li> <li>■ Full Complement Bearing</li> <li>■ 1-1/2" Diameter Piston</li> <li>■ 3/4" Diameter Double Heat Treated Pinion Journal</li> </ul>	<b>Fasteners</b>	Wood and machine screws Specify door thickness if over 1-3/4"
<b>Fluid</b>	All Weather Fluid	<b>Mounting</b>	Parallel arm (Push Side)
<b>Handing</b>	Non-Handed	<b>Arms</b>	Extra heavy duty, standard Cush-n-stop and spring cush, optional
<b>Size</b>	Adjustable Spring Size 1-5	<b>Finishes/Colors/ Powder Coat</b>	<ul style="list-style-type: none"> <li>■ Aluminum (689)</li> <li>■ Statuary Bronze (690)</li> <li>■ Light Bronze (691)</li> <li>■ Black (693)</li> <li>■ Dark Bronze (695)</li> <li>■ Brass (696)</li> <li>■ Custom colors optional</li> </ul>
<b>Warranty</b>	2 years		<ul style="list-style-type: none"> <li>■ Optional SRI primer - powder coat only</li> <li>■ Optional plated finishes*</li> </ul> <i>*End caps are black</i>

### Special Templates

Customized installation templates or products may be available to solve unusual applications. Contact LCN Product Support for assistance.



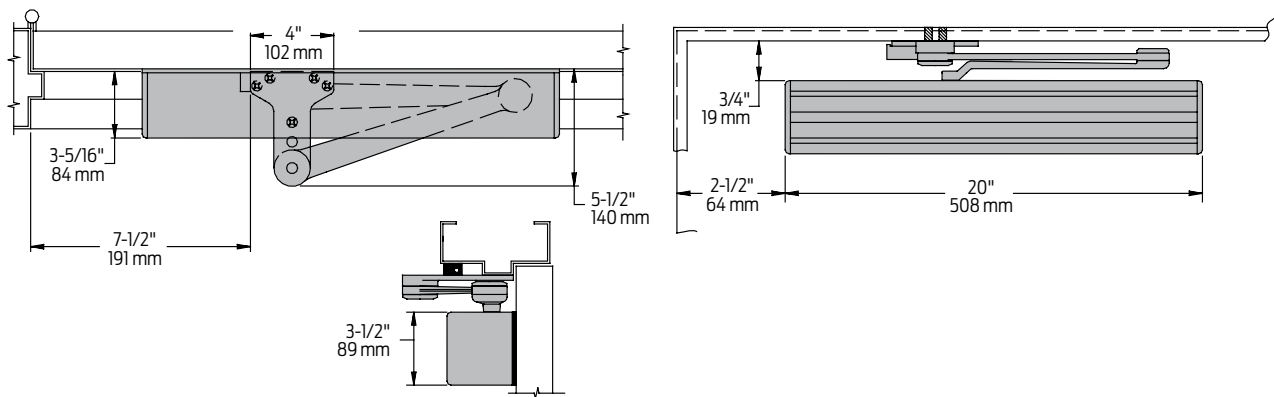
● AVAILABLE  
○ NOT AVAILABLE

♿ Meets ADA requirements (power mode).  
\* See individual series for maximum manual opening.

4840  
Series  
Auto Equalizer

Mounting details

Parallel Arm (Push  
Side) Mounting



<b>Butt Hinges</b>	Should not exceed 5" (127 mm) in width
<b>Auxiliary Stop</b>	Recommended when CUSH-N-STOP or SPRING CUSH arms are not used
<b>Clearance</b>	EDA or CUSH shoes is 5-1/2" (140 mm) from door face
<b>Top Rail</b>	Minimum 4-1/8" (105 mm). 6" minimum top rail for screw not to show in glass
<b>Head Frame</b>	(Flush) requires PA SHOE ADAPTER, 4840-419
<b>Stop Width</b>	Minimum 1" (25 mm)
<b>Blade Stop</b>	Clearance requires 1/2" (13 mm) BLADE STOP SPACER, 4840-61
<b>System Diagram</b>	See "AUTOMATIC OPERATORS" section pages 7-8 for typical system wiring, and pages 28-29 for electrical and pneumatic data for control boxes
<b>Maximum Opening</b>	<ul style="list-style-type: none"><li>■ Maximum power opening is 90° with all arms</li><li>■ Maximum manual opening is 105° with EDA or SPRING CUSH arms</li><li>■ Maximum manual opening is 100° with CUSH-N-STOP arm</li></ul> <p>NOTE: For CUSH-N-STOP or SPRING CUSH arm installations with maximum opening less than listed above, consult factory for Special Template</p>

- Notes:
- Multi-door solution utilizing 10, 000,000 cycle heavy duty door closer
  - Requires control boxes with integral compressor and control box using auxiliary air supply
  - See CONTROL BOX pages 28-29 and actuators and accessories, pages 115-131
  - Guard rails/safety mats not required

## Cylinders



**4841-3971**  
Cast Iron Cylinder Assembly

- Non-handed
- Standard



**4841-3071**  
Cast Iron Cylinder Assembly

- Non-handed
- Mounting plate
- Standard

## Cover



**4840-72MC**  
Metal Cover

- Non-handed
- With black end caps
- Standard

## Arms



**4840-3077EDA**  
Extra Duty Arm

- Non-handed
- Features forged solid steel main arm and forearm for potentially abusive installations
- Standard



**4840-3077CNS**  
Cush-n-Stop Arm

- Non-handed
- Features forged solid steel main arm and forearm with stop in soffit shoe
- Optional



**4840-3077SCNS**  
Spring CUSH Arm

- Non-handed
- For abusive applications features forged solid steel main arm and forearm with spring loaded stop in soffit shoe
- Optional

## Installation accessories



**4840-30**  
CUSH Shoe Support

- Provides anchorage for fifth screw used with EDA and CUSH arms, where reveal is less than 3-1/16" (78 mm)



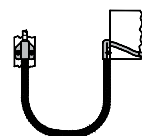
**4840-61**  
Blade Stop Spacer

- Required to lower parallel arm shoe to clear 1/2" (13 mm) blade stop



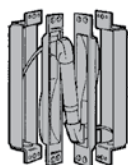
**4840-419**  
PA Flush Panel Adapter

- Provides horizontal mounting surface for parallel arm shoe on single rabbeted or flush frame



**4840-459**  
Door Loop Kit

- Surface mounted, flexible metal loop transfers pressurized air via pneumatic tubing from frame to closer end cap
- Extra caps allow tubing to run on frame surface or concealed in the frame.



**4840-460**  
Pneumatic Transfer Hinge

- Transfers pressurized air via pneumatic tubing from frame to door leaf for fully concealed installations
- Preparation of a raceway is required from the hinge stile of the door to the top rail for concealment of the pneumatic tubing within the door leaf

### How-to-order 4840 Series closers

#### Specify finish

- ☐ Standard Powder Coat \_\_\_\_\_  
Aluminum, Dark Bronze, Statuary, Light Bronze, Black, Brass

### Closer options

#### Finishes

- ☐ Custom Powder Coat (RAL) \_\_\_\_\_  
☐ Plated Finish, US \_\_\_\_\_

#### Arm

- ☐ CUSH-N-STOP (CUSH)  
☐ SPRING CUSH (SCUSH)

#### Screw pack

- ☐ TB\*, Wood & Machine Screw (TBWMS)  
\*Specify door thickness if other than 1-3/4".

#### Installation accessories

- ☐ Cush Shoe Support, 4840-30  
☐ Blade Stop Spacer, 4840-61  
☐ PA Flush Panel Adapter, 4840-419  
☐ Door Loop Kit, 4840-459  
☐ Pneumatic Transfer Hinge, 4840-460

#### Special template

- ☐ ST- \_\_\_\_\_

#### Closer will be shipped with:

- Standard cylinder
  - Standard metal cover
  - Extra duty arm
  - Wood and machine screw pack
- unless options listed below are selected

### Table of sizes

- Non-sized 4841 cylinder is adjustable from size 1 through size 5 and is shipped set to size 3
- Closing power of 4841 closers may be increased 50%

#### Exterior (and Vestibule) door width

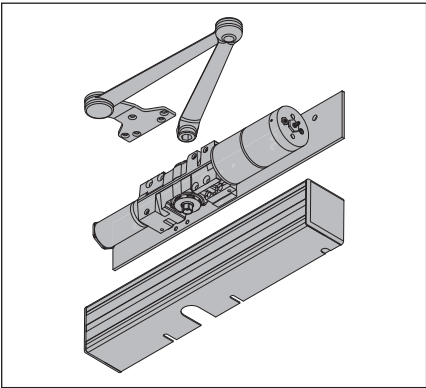
24"	30"	36"	42"
610mm	762mm	914mm	1067mm
	size 3	size 4	size 5
4841	Minimum door width		

#### Interior door width

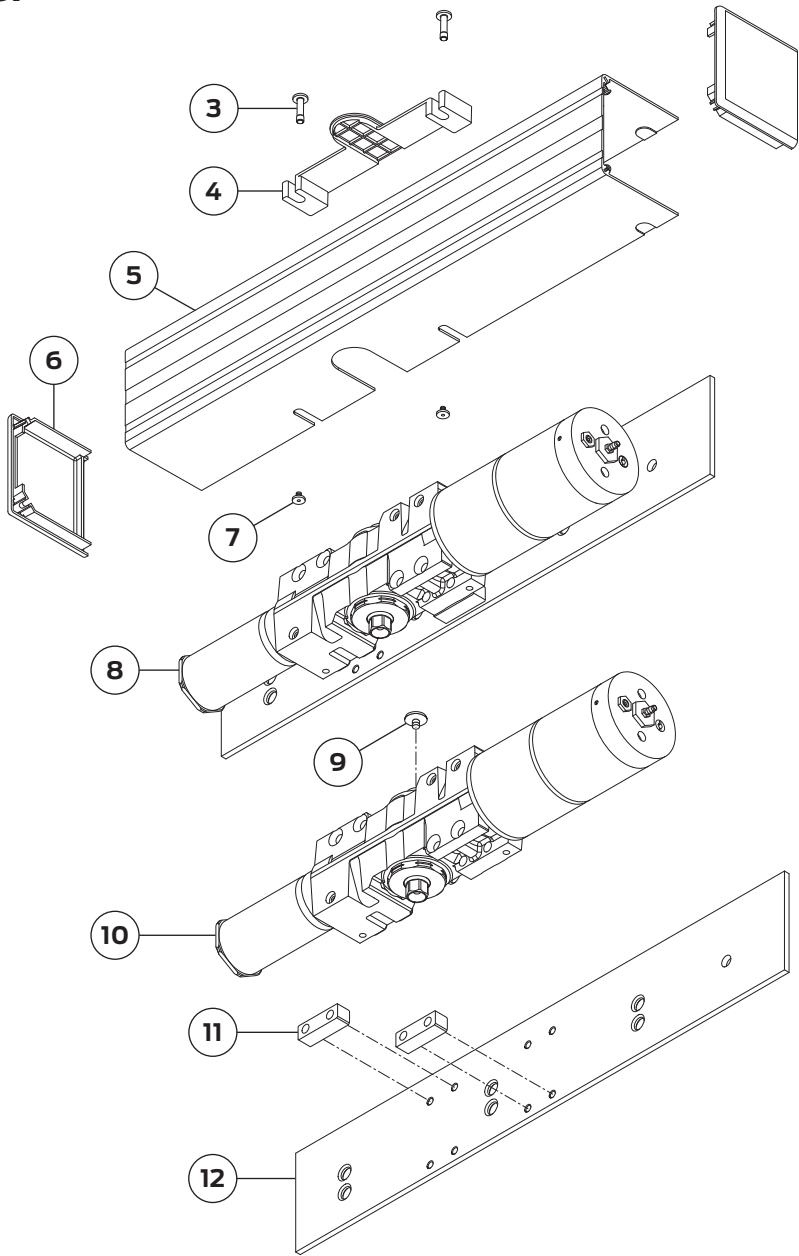
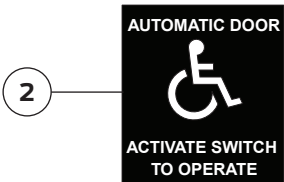
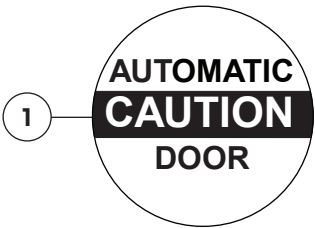
24"	34"	38"	48"	54"
610mm	864mm	965mm	1219mm	1372mm
	size 2	size 3	size 4	size 5
4841	Minimum door width			

→ Indicates recommended range of door width for closer size.

4840 Series "Auto-Equalizer"



Cylinder & Cover Parts



No.	Description	Part number
1	Caution Decal *	4840-155-1
2	Activation Decal †	4840-155-2
3	Long Cover Screw (F)	4840-31L
4	Cover Insert ‡	4840-163
5	Metal Cover (F) §	4840-72MC
6	Cover Endcap	4840-334

\* Black/Yellow Caution decal.

† Blue/White Switch decal.

‡ Includes No. 3(2).

No.	Description	Part number
7	Cover Screw (F)	4840-31
8	Standard Cylinder Assembly (F)	4841-3071
9	Arm Screw (F)	4840-159
10	Cylinder Only (F) #	4841-3971
11	Stand Off	4840-182
12	Mounting Plate (F)	4840-18

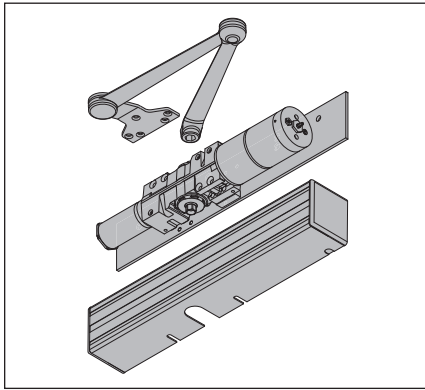
§ Includes Nos. 3(2), 4, 6(2), & 7(2).

|| Includes Nos. 10, 11(2), & 12. Cylinder is adjustable, size 1-5.

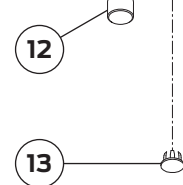
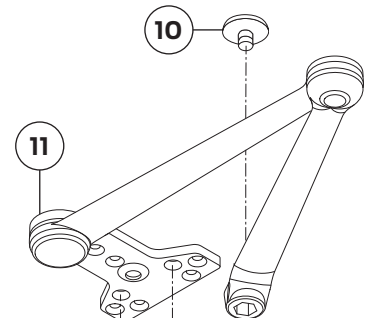
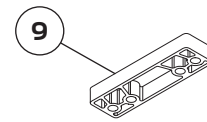
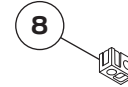
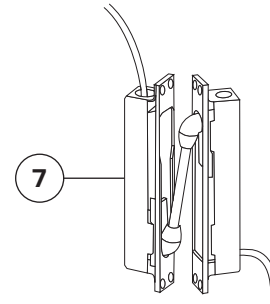
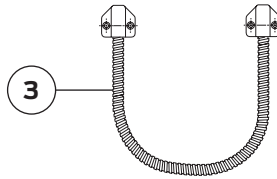
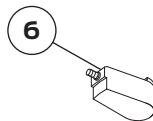
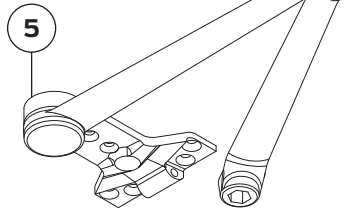
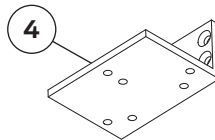
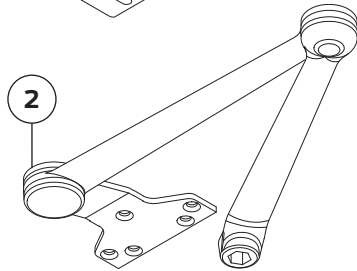
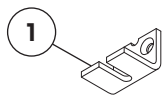
# Cylinder is adjustable, size 1-5.

Please specify finish (F) and size (S) where indicated. See the latest edition of the LCN catalog for part descriptions and specifications on many of the items shown above. List prices for items shown above can be located in the current LCN price book.

## 4840 Series "Auto-Equalizer"



Arms &amp; Additional Components



No.	Description	Part number
1	Cush Shoe Support (F)	4840-30
2	Extra Duty Arm (F)*	4840-3077EDA
3	Door Loop Kit	4840-459
4	Panel Adapter (F)	4840-419
5	Spring Cush-N-Stop Arm (F)†	4840-3077SCNS
6	Spring Cush Block (F)	4840-3080
7	Pneumatic Hinge	4840-460
8	Fifth Screw Spacer	4840-201

\* Includes Nos. 8 &amp; 10.

† Includes Nos. 6, 8, &amp; 10.

No.	Description	Part number
9	Blade Stop Spacer (F)	4840-61
10	Arm Screw (F)	4840-159
11	Cush-N-Stop Arm (F)‡	4840-3077CNS
12	Stop (F)	4840-384
13	Plug (F)	4840-124
14	WMS Screw Pack (Not Shown) (F)	4840-WMS
15	TBWMS Screw Pack (Not Shown) (F)	4840-TBWMS

‡ Includes Nos. 8, 10, 12, &amp; 13.

Please specify finish (F) where indicated. See the latest edition of the LCN catalog for part descriptions and specifications on many of the items shown above. List prices for items shown above can be located in the current LCN price book.